

## DOES SOIL CARBON LOSS IN BIOMASS PRODUCTION SYSTEMS NEGATE THE GREENHOUSE BENEFITS OF BIOENERGY?

ANNETTE L. COWIE<sup>1,\*</sup>, PETE SMITH<sup>2</sup> and DALE JOHNSON<sup>3</sup>

<sup>1</sup>*NSW Department of Primary Industries, PO Box 100, Beecroft, 2119 Australia;  
CRC Greenhouse Accounting*

<sup>2</sup>*School of Biological Sciences, University of Aberdeen, Aberdeen, UK*

<sup>3</sup>*Natural Resources and Environmental Science, University of Nevada, Reno, Nevada USA 89557*

(\*Author for correspondence: Tel: +61-2987-20138, Fax: +61-2-987-16941;

E-mail: [annettec@sf.nsw.gov.au](mailto:annettec@sf.nsw.gov.au))

(Received 22 February 2005; accepted in final form 8 December 2005)

**Abstract.** Interest in bioenergy is growing across the Western world in response to mounting concerns about climate change. There is a risk of depletion of soil carbon stocks in biomass production systems, because a higher proportion of the organic matter and nutrients are removed from the site, compared with conventional agricultural and forestry systems. This paper reviews the factors that influence soil carbon dynamics in bioenergy systems, and utilises the model FullCAM to investigate the likely magnitude of soil carbon change where bioenergy systems replace conventional land uses. Environmental and management factors govern the magnitude and direction of change. Soil C losses are most likely where soil C is initially high, such as where improved pasture is converted to biomass production. Bioenergy systems are likely to enhance soil C where these replace conventional cropping, as intensively cropped soils are generally depleted in soil C. Measures that enhance soil C include maintenance of productivity through application of fertilisers, inclusion of legumes, and retention of nutrient-rich foliage on-site.

Modelling results demonstrate that loss of soil carbon in bioenergy systems is associated with declines in the resistant plant matter and humified soil C pools. However, published experimental data and modelling results indicate that total soil C loss in bioenergy systems is generally small. Thus, although there may be some decline in soil carbon associated with biomass production, this is negligible in comparison with the contribution of bioenergy systems towards greenhouse mitigation through avoided fossil fuel emissions.

**Keywords:** bioenergy system, greenhouse gas balance, land use change, soil carbon

### Introduction

Interest in bioenergy is growing across the Western world in response to mounting concerns about climate change due, in large part, to use of fossil fuels for energy. Biomass for conversion to bioenergy may be derived from waste sources such as sawmill residues and construction and demolition waste, where bioenergy is a desirable alternative to disposal to landfill. Biomass is also obtained from forestry and agriculture, either from dedicated systems, where the entire crop or forest is harvested for bioenergy, or as a by-product of crop or timber production. In most conventional crop and timber production systems a significant fraction of the

biomass remains on site after harvest, whereas, bioenergy systems often remove the majority of above ground biomass at harvest. For example, wheat straw that would normally be plowed into the soil may be baled and removed after the grain has been harvested; branches that would usually decompose on the forest floor after timber harvest, can be compressed into bundles for efficient transport to a power plant. There is some concern that bioenergy systems may suffer from declining soil carbon stocks. This paper reviews the factors that influence soil carbon dynamics in bioenergy systems, and, through modelling, investigates the likely magnitude of soil carbon change where bioenergy systems replace conventional land uses, and the impact on greenhouse-gas mitigation benefits of bioenergy systems. The review focuses on carbon dynamics of mineral soils.

### **1. The Link Between Soil Carbon and Bioenergy**

The soil organic carbon pool, derived principally from plant matter, constitutes a fundamental dynamic link in the carbon cycle, and contains 50–80% of the carbon in a mature forest and over 95% of carbon in a crop or pasture system (Bolin et al. 2000). Soil carbon stock at any one time reflects the balance between the inputs from plant residues and other organic matter, and losses due to decomposition, erosion and leaching. Thus, removal from the field or forest of a higher proportion of biomass in bioenergy systems, compared with crop or timber production systems, reduces the addition of organic matter to the soil carbon pool, and, therefore, may result in a decline in soil carbon stock. Loss in soil carbon may reduce long term productivity, and should be accounted in assessing the net greenhouse gas balance of bioenergy systems. The following sections consider the natural and anthropogenic factors that influence soil carbon stocks.

### **2. Natural Processes Affect Soil Carbon**

Soil organic carbon comprises residues of plants, animals and microorganisms in various stages of decomposition. The major sources are turnover of leaves and fine roots. Factors that enhance plant growth, such as warm, moist climate and high soil fertility promote organic matter addition to the soil carbon pool.

Organic matter is decomposed through comminution and mineralisation, which are dependent on appropriate soil fauna and microorganisms (Spain and Hutson 1983; Cogle et al. 1995). Mineralisation, in which soil microbes digest organic matter, respiring C to the atmosphere and simultaneously releasing plant nutrients, is most rapid in warm, moist climates that promote microbial activity. Conversely, mineralisation is slow in situations where microbial activity is inhibited: low temperatures, limited moisture, low pH or limited oxygen due to waterlogging or soil

compaction. Mineralisation rate is influenced by decomposability or “quality” of the organic residues, which is determined by chemical composition (Martens 2000), being lowest for material low in nitrogen or high in recalcitrant fractions such as lignin and waxes (Oades 1988; Van Cleeve and Powers 1995). Note that in this review, consistent with the IPCC (2003), “soil organic carbon” refers to organic carbon contained within the mineral horizons; the litter layer, comprising undecomposed and partially decomposed plant material, is considered to be a separate carbon pool.

Cycling of carbon is inherently linked with cycling of nutrients, particularly nitrogen, because nutrients are returned to the soil as organic matter decomposes. In many environments nitrogen availability is the factor limiting plant productivity and, therefore, carbon inputs to the soil.

The influence of environment on rate of plant growth and turnover, and rate of mineralisation of organic matter, leads to high soil carbon stocks in cool temperate forests and wetlands where plant productivity is relatively high but activity of soil biota is inhibited (Bunnell et al. 1977; Spain et al. 1983; Attiwill and Leeper, 1987; Bolin et al. 2000; Van Cleeve and Powers 1995). Soil carbon stocks are lower in the wet tropics where organic matter is turned over rapidly, and lowest in dry environments where plant growth is limited (Bolin et al. 2000).

Soils with high active clay content, high base status, and those high in aluminium and iron, provide strong physical and chemical protection to organic colloids, through formation of intra-aggregate or organomineral complexes (Islam and Weil 2000; Shepherd et al. 2001). Sandy soils have low capacity to stabilise soil carbon (Zinn et al. 2002). Thus, soil carbon stocks are high in soils with high active clay content (e.g. Andisols, Vertisols, Mollisols), followed by low activity clay soils (Oxisols, Ultisols) and low in all sandy soils (Scott et al. 2002; Nabuurs et al. 2003).

The soil organic carbon pool comprises components with different turnover times. The most rapidly decomposing, and often smallest, pool is the labile pool (microbial biomass, soluble C, light fraction and macroorganic matter), with a turnover time of 1–5 years (Parton et al. 1987). The least active pool is essentially inert organic matter, highly resistant to decomposition due to physical and/or chemical protection, that decays on a time frame of thousands of years, while the remaining soil carbon is contained in the humified pool, with turnover time of decades (Parton et al. 1987).

### **3. Land Use Affects Soil Carbon**

In an undisturbed natural ecosystem, the additions and losses of soil organic carbon are balanced over time, and soil carbon stock reaches a stable equilibrium value. Similarly, in a managed forestry or agricultural system where land use practices have remained constant over long periods, inputs and losses will

be in equilibrium, but if land use or management practices are altered so that the balance between inputs and decomposition is affected, soil carbon stock will change.

It is well known that intensive cropping reduces soil organic matter content. This is often attributed to enhanced mineralisation due to cultivation (e.g. Mann 1986; Attiwill and Leeper 1987; Blair et al. 1995; Grigal and Berguson 1998; Dalal and Chan 2001), which aerates the soil, redistributes and exposes physically protected organic matter, encouraging microbial breakdown (Shepherd et al. 2001). However, there is evidence that soil disturbance *per se* has little impact on soil organic matter content (Paul et al. 2002). Probably of greater significance, cropping systems commonly suffer soil erosion, and include regular periods of minimal organic matter input during fallow and in early establishment (Dalal and Chan 2001). Thus, cropping decreases soil carbon through a combination of reduced input and enhanced loss. The loss in soil C resulting from cultivation is greatest in soils initially high in soil C (Mann 1986).

A change in land use from forest or grassland to cropping will, therefore, generally lead to loss of soil carbon (e.g. Whitbread et al. 1998; Murty et al. 2002). Guo and Gifford (2002), in their comprehensive review, found that soil C stock was reduced 50% or more when pasture land was converted to cropping.

Conversely, conversion of cropland to pasture or forest is likely to increase soil carbon though it may decline initially (Smith et al. 1997; Romanya et al. 2000; Vesterdal et al. 2002). In the tropics, where soil C turnover is rapid, Binkley and Resh (1999) observed no impact on total soil C of conversion of sugar cane to Eucalyptus plantation after 32 months, however there was a sharp decline in cane-derived C, matched by increasing inputs from the plantation. Guo and Gifford (2002) concluded that, on average, replacing cropping with pasture or forest leads to an increase in soil C of 18–20%.

The impact on soil carbon of conversion from pasture to forest is less clear: some studies report a substantial decline (Gifford and Barrett 1999; Scott et al. 1999; Post and Kwon 2000; Turner and Lambert 2000), though recent reviews have concluded that large losses are unlikely in most situations (Guo and Gifford 2002; Paul et al. 2002). Soil C is likely to decrease initially, as a result of a decline in pasture litter inputs in the early phase of plantation establishment, and then increase as litter input from the forest is added to the system (Johnson 1992; Smethurst and Nambiar 1995; Grigal and Berguson 1998). Significant losses of soil carbon after reforestation are most likely in soils that are high in labile carbon, such as where new plantations are established into pastures that have been heavily fertilised, and enhanced productivity has elevated the soil C above native levels. As the plantation grows, soil carbon is replenished from litter fall and root turnover, usually restoring soil C to original stock within 30 years (Paul et al. 2002).

However, there is some evidence from chronosequence and paired-site studies that equilibrium soil carbon stock may be lower in plantations than in the pasture

they replace (e.g. Gifford and Barrett 1999; Turner and Lambert 2000). Interpretation of results from such studies is complicated by confounding impacts of site factors, initial carbon content, and management practices applied to initial and subsequent land use. Between studies, comparisons are complicated by differences in depth sampled, sample preparation, analytical method, correction for bulk density change, and pools included (see Smith et al. 1998; Gifford and Barrett 1999; Guo and Gifford 2002; Murty et al. 2002; Paul et al. 2002). In their comprehensive reviews of published data, in which these limitations were recognised and minimised, Paul et al. (2002) and Guo and Gifford (2002) concluded that reforestation with broadleaf tree species does not change, or increases, soil carbon, while reforestation with pine species generally leads to a small decline in soil carbon stock of around 15%. However, this conclusion is based on limited data, and should be verified.

Possible explanations for lower soil C under plantations (particularly pines) compared with pastures are that trees provide less input of C to the soil due to:

- lower proportion of fixed carbon allocated to the roots (Lugo and Brown 1993; Kuzyakov and Domanski 2000)
- slower turnover of roots (Brown and Lugo 1990; Johnson 1992; Post and Kwon 2000)
- slower decomposition of surface litter due to lower “quality” (Saggar et al. 2001), reducing input from litter to soil
- micrometeorological impacts: slower decomposition of surface litter because soil surface is generally cooler and drier under forest (Brown and Lugo 1990; Grove et al. 2001), due to higher transpiration rates and shading
- limited interaction of surface litter with soil, possibly due to inhibition of activity of soil fauna, so that decomposition occurs at the soil surface (Oades 1988).

The effect may be indirect, resulting from a decline in productivity due to:

- soil acidification under pines due to organic acids released from decomposing foliage (Motavalli et al. 1995)
- net loss of nutrients from the site due to asynchrony of nutrient supply and demand: nutrient supply is greatest during early growth while slash from previous rotation mineralises, when tree requirements are small and root exploration is limited, so nutrients, especially nitrogen, may be leached (Parfitt et al. 2003; Heilman and Norby 1998); when required during the rapid growth phase prior to canopy closure, the nutrients are unavailable
- lower nitrogen inputs due to loss of N-fixing pasture legumes.

There may be enhanced loss of soil C due to the ability of the ectomycorrhizal fungi associated with *Pinus radiata* to oxidise organic matter inaccessible to grassland fungi (Chapela et al. 2001).

Knowledge of the factors influencing soil carbon allows prediction of the probable soil carbon dynamics under bioenergy systems.

#### 4. Impacts of Bioenergy Systems on Soil Carbon

##### 4.1. BIOENERGY SYSTEMS BASED ON INCREASED REMOVAL OF BIOMASS, EXISTING LAND USE MAINTAINED

Conversion from conventional grain or timber production to bioenergy systems based on increased removal of biomass may reduce the soil carbon content as a result of three impacts:

1. Increased removal of biomass will directly reduce organic matter additions to the soil. In long rotation forestry systems a large portion of the carbon fixed in biomass is returned to the soil over the rotation through litter input or at harvest. For example, studies of harvest recovery for six hardwood and softwood species in Australia found that 45–70% of above-ground biomass was removed at harvest (Ximenes and Gardner, unpublished). Assuming a root to shoot ratio of 0.23 (IPCC 2003), 43–63% of carbon in biomass remained on site after harvest. However, in short rotation forests and bioenergy crops a greater proportion of total biomass produced is removed (Smith and DeBell 1973) so there is greater potential for soil carbon depletion.
2. Removal of plant biomass exports nutrients from the site, which will lead to loss of productivity in the long term unless these nutrients are replaced. Bioenergy systems that remove foliage and bark, particularly high in N, P, K and Ca, are at high risk of nutrient depletion compared with grain and timber production systems. Nitrogen deficiency, and soil acidification resulting from export of base cations (Olsson et al. 1996) are particularly likely. In the long term, these impacts on soil chemical fertility may limit plant productivity leading to reduced input to the soil carbon pool.
3. As soil carbon begins to decline, this will directly impact on plant productivity, due to the role played by soil organic matter in maintaining biological fertility (nutrient cycling), chemical fertility (nutrient availability, nutrient retention) and physical fertility (aggregate stability, porosity, moisture retention) (Tisdall and Oades 1982; Sherwood and Uphoff 2000). Declining plant productivity will, in turn, further reduce soil carbon.

“Harvest index”, that is, the fraction of above ground biomass removed at harvest, is higher for bioenergy than conventional crops and forests. However, the impact of biomass removal on soil C will be determined not by harvest index but by the fraction of total biomass production that is removed. In forest systems, a considerable fraction of the net primary production (NPP) is directed to fine roots with fast turnover (Vogt 1991; Janssens et al. 2002), rapidly entering the soil C pool; a further significant proportion of NPP is retained on site in litter fall and root biomass (Heilman and Norby 1998). Similarly, in perennial grass systems a high proportion (up to 50%) of total biomass production remains on-site after harvest as litter and root biomass (Hansen et al. 2004).

While these predicted impacts of bioenergy systems are anticipated from knowledge of carbon and nutrient cycling, there is limited experimental evidence from which to verify long term impact of bioenergy systems on plant productivity and soil carbon. Some evidence of likely impacts is seen from studies of whole tree harvesting (WTH, i.e. removal of stem+crown). In New Zealand, growth and nutrition of second rotation radiata pine did not differ between WTH and sawlog harvest treatments; WTH combined with removal of forest floor reduced growth and foliar N only on a sandy infertile soil (Smith et al. 2000a), indicating that ecosystem C stock, including soil C, may be little affected by WTH. Similarly, Johnson et al. (2002) observed little impact of WTH on soil carbon stock in US forests, compared with sawlog harvesting, though at one of four sites the sawlog treatment had 17% higher regeneration biomass than the WTH treatment 16 years after harvest; this differential effect on plant growth is likely to lead to reduced soil C in the longer term. In their meta-analysis of impacts of forest management on soil C, Johnson and Curtis (2001) concluded that WTH reduced soil C in A horizons by 6% on average, compared with pre-treatment or unharvested controls, while B horizons were unaffected. Sawlog harvesting, in contrast, did not affect soil C in hardwood or mixed stands, and led to a temporary increase in soil C in the A horizon of coniferous stands as a result of incorporation of residues (Johnson and Curtis 2001).

In a study on the impact of harvest residue management conducted on two soil types of differing fertility, Mendham et al. (2003) observed that residue retention increased exchangeable cations but had little impact on soil C stock to 20 cm depth, compared with residue removal; residue retention improved plantation growth only on the lower fertility soil. In an agricultural system, removal of hay 3–4 times per year, despite higher rates of inorganic fertiliser, led to lower soil carbon in comparison with periodic grazing (Franzluebbers et al. 2000).

Thus there is some experimental evidence of decline in productivity and/or soil C where all above ground biomass is removed, particularly in infertile soils.

In many conventional forest and crop management systems, residues are burnt after harvest. Conversion of such systems to bioenergy systems would therefore remove biomass that is otherwise lost through burning. Therefore, biomass removal will not change the inputs of carbon, though non-volatile nutrients that would otherwise remain in ash will be removed. In systems where residues are not burned, unless they are incorporated by tillage it is likely that much of the coarse litter decays at the surface rather than entering the soil carbon pool. Again, removal of this biomass will have limited impact on organic input to the soil.

Thus, increased removal of biomass in bioenergy systems is likely to cause some loss in soil carbon, but because a significant proportion of *total* biomass production is retained, including the root and leaf litter biomass that constitutes the major input to soil C, the impact on soil C of removal of biomass for bioenergy should generally be small.

#### 4.2. BIOENERGY SYSTEMS ENTAILING LAND USE CHANGE

Besides increased intensity of biomass removal from current land use, alternative options for increasing biomass production for bioenergy include:

1. conversion of cropland to short rotation bioenergy crops, such as rhizomatous perennial grasses (eg *Miscanthus*, switchgrass *Panicum virgatum*) or short rotation woody crops (eg willow, poplar) that are mown/coppiced every few years and allowed to regrow from roots/stump, and replanted after several harvests;
2. conversion of cropland to long rotation forest plantations for timber plus biomass
3. conversion of pasture to short rotation bioenergy crops
4. conversion of pasture to long rotation forest plantations for timber plus biomass.

It is likely that conversion of cropland (Options 1 and 2 above) will significantly increase soil carbon, due to enhanced input from leaf litter and root turnover and less frequent fallow, compared with conventional cropping. For instance, Tolbert et al. (2002) observed increased soil carbon stock under switchgrass and sweetgum within 3 years of conversion from conventional agriculture; 16 years after conversion from cropping, miscanthus increased soil C by  $14 \text{ t ha}^{-1}$ , representing 29% of the C input from miscanthus over the 16 year period (Hansen et al. 2004). Similarly, though soil carbon in 7–8 year old hybrid poplar plantations did not differ from adjacent row crops, simple modelling led the authors to predict a  $10\text{--}25 \text{ t ha}^{-1}$  soil C increase over a 10–15 year rotation (Grigal and Berguson 1998). Conventional wisdom suggests that soil C may accumulate to a greater extent under the “less intensive” management of Option 2, compared with Option 1, however, data are not available to test this assumption. The reduced frequency of harvest under Option 2 may lead to greater C accumulation than Option 1; however, a higher stocking rate and probably higher fertiliser rate under Option 1 may lead to higher plant inputs, that will, at least partially, overcome the impact on soil C of more frequent harvest.

Conversion of pasture (Options 3 and 4) may lead to small losses or gains, depending on the relative balance of organic inputs and decomposition rate under the old and new land uses (see Sections 2 and 3.)

Decomposition rates may be affected, for example, by input of readily decomposable organic material, which stimulates microbial activity, enhancing the rate of decomposition of existing soil organic matter (Woods et al. 1987; Cheng et al. 2003). The increased shading of the soil surface when land is converted from crop or pasture to forest can reduce surface temperatures, retarding litter decomposition rate (Grove et al. 2001), thus increasing the carbon stock in litter and decreasing input to the soil carbon pool.

Changes in the short term may be subtle, indicative of significant longer term impacts on soil C, not yet evident from measurement of total soil C. For example, Ma et al. (2000a) observed no change in soil C concentration over 2 years after conversion from pasture to switchgrass, however C turnover and microbial biomass

C increased over the period. Similarly, Garten and Wullschleger (1999) observed no increase in soil C stock of switchgrass plots in comparison with tall fescue, five years after establishment of the switchgrass, although root carbon was at least 100% higher in the switchgrass. Where switchgrass replaced cropping, no change in soil C was detected over 2–3 yrs, though soil C was 45% higher at 0–15 cm after 10 years under switchgrass compared with the cropped/fallowed control (Ma et al. 2000b).

## 5. Land Management to Enhance Soil Carbon

Soil carbon is promoted by management practices that maximise organic matter inputs and minimise losses.

### RESIDUE MANAGEMENT

#### *Retain Slash/Crop Residues Rather than Burning*

Retention of residues, rather than burning, increases organic matter input and protects against erosion of the carbon-rich surface soil, increasing soil C (Rasmussen and Parton 1994; Ayanaba et al. 1976). In particular, foliage, bark and fine branches should be retained on site, as these are high in nutrients which also leads to high ash content, undesirable for most bioenergy applications. Retaining leaves is easiest to achieve with deciduous tree species, or perennial grasses with a dormant phase; for broadleaf species this can be achieved by windrowing or stacking branches in the field until the leaves drop, though this may pose an unacceptable fire risk in some climates.

### FERTILISER

#### *Apply Fertiliser to Overcome Nutrient Deficiencies and Maintain Fertility*

Fertiliser application, where it increases plant growth and therefore litter inputs, leads to soil C accumulation in forests (Johnson 1992; O'Connell and Grove 1993; Schroeder 1991 and Turner and Lambert 1986) and crops (Dalal and Chan 2001). Fertiliser rates and timing should be matched to the requirements of the crop/forest to maximise efficiency of fertiliser use and limit off-site impacts, though predicting rates based on harvest removals is complicated by atmospheric deposition, adsorption and losses through leaching, erosion, denitrification and volatilisation (Heilman and Norby 1998). However, manufacture of fertiliser, particularly nitrogen fertilisers, leads to significant greenhouse gas emissions (Wood and Cowie 2004), and application of nitrogen fertilisers leads to nitrous oxide emissions (Boeckx and Van Cleemput 2001), so these sources of emissions should be included in calculating the net greenhouse gas balance of the system.

*Consider Returning Ash*

Return of ash could aid in replacing nutrients removed at harvest (other than N, which is volatilised during combustion). However, efficient means of distribution, and integration into the crop/forest fertiliser strategy, must be found to ensure net positive returns (in terms of both financial and GHG balance) from this practice.

## ORGANIC MATTER ADDITION

*Apply Additional Organic Matter in the form of Manure, Biosolids and Recycled Organic Composts*

Recycled organics such as manures, biosolids and composts are more effective than fresh plant residues in raising soil C because the carbon is present as relatively more recalcitrant fractions (Inbar et al. 1990; Poulton 1995; Zinati et al. 2001)

## SPECIES

*Consider Mixed Species to Maximise Site Productivity*

Each species has a different carbon allocation strategy that results in a different pattern, rate, quality and quantity of organic carbon input to the soil (Lugo and Brown 1993). Mixed species planting can maximize biomass production, where species have facilitative rather than competitive interaction. For example, mixtures including nitrogen-fixing species (e.g. acacia with eucalypts (Bauhus et al. 2000), lupin with pine (Beets and Madgwick 1988), and clover with pasture grasses (Ledgard 1991) commonly produce higher total biomass yields than monocultures of either species.

Nitrogen fixing vegetation, like fertilization, can enhance soil C due to the increase in fertility. In addition, N fixation seems to add more C to soils than fertilization, on average, perhaps due to the fact that organic matter (in the form of litter) is added along with the N (Johnson and Curtis 2001).

## CULTIVATION

*Minimise Cultivation Disturbance to Reduce Mineralisation and Erosion Losses*

Minimising soil disturbance during site preparation may conserve soil carbon, particularly on erodible soils (Kort et al. 1998). For example, in a trial of site preparation methods for *Eucalyptus globulus* in Portugal, surface harrowing reduced soil C stock (to 40 cm depth) by 25%, while deep ploughing reduced it by 40%, 18 months after treatment (Madeira et al. 1989). Site preparation for tree planting commonly involves ripping, often in conjunction with mounding, confined to the planting line. Ripping depth and size of mound can be minimised without jeopardising early growth in some soil types (Lacey et al. 2001) but mounding is clearly essential for successful plantation establishment in other soil types/landscape positions. Longer rotations, or coppicing, reduce the frequency of soil disturbance in forest systems.

Minimum tillage or no-till (NT) planting techniques increase soil carbon in cropping systems (eg Lal 1997; Smith et al. 2000b; Del Grosso et al. 2002; Tolbert et al. 2002; West and Marland 2002), though in Australia positive impact of NT on soil carbon is restricted to wetter temperate regions (Dalal and Chan 2001).

The most significant factor for promoting soil carbon is high plant growth rate. Therefore, management practices, including site preparation, should be designed to address site-specific growth limitations to the crop or plantation so as to ensure successful establishment and maximum growth rate.

## 6. Monitoring Soil Carbon Changes

Soil C stock is notoriously difficult to quantify due to substantial spatial variability at fine and broad scale, however effective sampling, validation and accounting methods are available (McKenzie et al. 2000; Conant and Paustian 2002; Palmer et al. 2002). Nevertheless, accurate measurement and monitoring of soil carbon, particularly to detect change in the short term (<5–10 years), is prohibitively expensive for routine accounting of carbon sequestration in bioenergy projects, as hundreds of samples will be required to obtain acceptable accuracy (Garten and Wullschlegel 1999; Smith 2004).

Modelling presents an alternative approach to estimating soil carbon change. As indicated above, soil carbon change is determined by the balance between plant inputs and soil C turnover rate, influenced by initial soil C status, soil type and climate; models developed from understanding of these interactions can predict soil C change. The RothC model of soil C dynamics is well proven in many environments (e.g. Coleman et al. 1997; Romanya et al. 2000). Linked with a model to estimate plant inputs, RothC can be utilised to estimate soil carbon change, as demonstrated below using the FullCAM model. In order to simulate soil C dynamics of a project, baseline soil C and environmental data are required. In addition to total soil organic carbon, a measure of the labile and recalcitrant fractions is necessary. A fractionation procedure developed by Skjemstad et al. (2004), based on sieving to determine particulate organic carbon and charcoal measurement by photo-oxidation and  $^{13}\text{C}$  NMR, allows quantification of soil C pools equivalent to the conceptual pools of the RothC model. With suitable calibration, mid-infrared analysis can provide a simple, cost-effective approximation of pool structure (Janik et al. 1998).

Therefore, it is recommended that accounting for soil carbon change in bioenergy projects be undertaken through a combination of measurement, to establish the baseline C stocks in each of the soil C pools, and modelling to estimate carbon dynamics over time. Models of plant growth and soil C dynamics have been calibrated for many crop/forest systems (e.g. Paul et al. 2003), though further work is needed to parameterise models for a broader range of environments and agricultural and

forest systems, and to improve the ability of models to predict impacts of complex soil processes over the long term.

## 7. Modelling the Impact of Soil Carbon Change on Greenhouse Gas Balance of Bioenergy Systems

The FullCAM model of carbon dynamics (Richards 2001) was employed to investigate the impact of soil C change on greenhouse gas balance of bioenergy systems. FullCAM links the process-based model of forest growth, 3PG (Landsberg and Waring 1997), with the forest carbon accounting model CAMFor (Brack and Richards 2002), and the RothC model of soil organic matter turnover (Jenkinson et al. 1987, 1991). A parallel series of modules within FullCAM models agricultural systems, linking CAMAg (equivalent to CAMFor) with RothC. The calculation of displacement of fossil fuel through substitution by bioenergy follows the approach of the GORCAM model (Schlamadinger and Marland 1996). Input data required are monthly climatic data, site specific soil data, and management events.

FullCAM was used to simulate the long term GHG balance of bioenergy systems in comparison with conventional forestry systems, for three sites for which model parameterisation was available (Paul et al. 2003).

Three conventional forestry systems and associated bioenergy systems were modelled:

### *System 1* Short rotation Eucalypt plantation producing pulplogs

Reference: harvest residues decay on site, stems used for pulp

Bioenergy Case: harvest residues used for bioenergy, stems used for pulp

### *System 2* Radiata pine sawlog plantation

Reference: thinning and harvest residues decay on site, stems used for pulp and construction timber, excess mill residues burnt to waste

Bioenergy Case: thinning, harvest and excess mill residues used for bioenergy, stems used for pulp and construction timber

### *System 3* Eucalyptus sawlog plantation

Reference: thinning and harvest residues decay on site, stems used for construction timber, excess mill residues burnt to waste

Bioenergy Case: thinning, harvest and excess mill residues used for bioenergy, stems used for construction timber.

Table I lists site and management details for each system. Further detail of the sites, model parameterisation and model assumptions are given by Paul et al. (2002) and Paul et al. (2003). Harvest recovery, utilisation, time in service and landfill decay data are derived from unpublished studies by D. Gardner and F. Ximenes. In each case where forest residues are recovered for bioenergy it is assumed that

TABLE I

Site and management details for three conventional forestry systems and corresponding bioenergy systems

System	Short rotation eucalypt	Pine	Sawlog eucalypt			
Species	<i>Eucalyptus globulus</i>	<i>Pinus radiata</i>	<i>Eucalyptus grandis</i>			
Location	Western Australia	South Australia	South-Eastern Queensland			
Mean annual rainfall (mm)	1022	704	1138			
Mean annual air temperature (°C)	14.9	13.4	20.4			
Soil type	Sandy loam	Sand	Sandy loam			
Initial soil C (tC ha <sup>-1</sup> 0–30 cm)	49.8	43.9	67.7			
Rotation length (years)	10	35	28			
Thinning (age, % biomass removed)						
Thinning 1	NA	10 (50)	10 (50)			
Thinning 2	NA	24 (25)	18 (50)			
Thinning 3	NA	27 (10)	NA			
Activity	Reference	Bioenergy	Reference	Bioenergy	Reference	Bioenergy
Assumed fate of aboveground biomass (%)						
Thinning 1	NA	NA				
Bioenergy			0	88	0	82
Litter			100	12	100	18
Thinning 2	NA	NA				
Pulp			24	24	0	0
Sawn timber			16	16	0	0
Bioenergy			1	48	0	0
Mill residue			32	1	0	82
Litter			27	11	100	18
Thinning 3	NA	NA			NA	NA
Pulp			24	24		
Construction			16	16		
Timber			1	48		
Bioenergy			32	1		
Litter			27	11		
Clearfall						
Pulp	50	50	3	3	0	0
Sawn timber	0	0	29	29	10	10
Bioenergy	0	31	1	58	0.4	75
Mill residue	0	0	45	1	22	0.4
Litter	50	19	22	9	68	15

70% of the branch biomass is removed, leaving 30% of branch biomass, 100% leaf mass, and 2–3% stem mass (representing the stump), as litter. Where sawn timber is produced, it is assumed that 3.5% of the carbon from mill residues is utilised to dry the timber. The bioenergy and corresponding reference systems each produce the same mass of pulp and/or timber products. The bioenergy system is based on theoretical calculations for co-firing biomass in a 500 MW black coal power plant (Cowie, unpublished). The assumed displacement factor is 0.83 tC avoided fossil emission per tC in biofuel. Emissions from establishment and harvest are assumed to be, respectively, 1.1 tCO<sub>2</sub>e ha<sup>-1</sup> and 0.073 tCO<sub>2</sub>e per tC in biomass harvested. Processing and transport emissions are assumed to be 0.40 tCO<sub>2</sub>e per tC in biomass used for bioenergy.

### 7.1. CALCULATION OF NET GHG BALANCE

Net GHG balance for each system is determined from the carbon sequestration by the growing forest, plus the credit for avoided fossil fuel emissions, less the GHG emissions incurred in producing, processing and transporting the biomass, including indirect emissions from fertiliser manufacture. Non-CO<sub>2</sub> greenhouse emissions, specifically N<sub>2</sub>O release after N fertiliser application, calculated as 1.25% of N applied (IPCC, 1997), and non-CO<sub>2</sub> from fossil fuel combustion, are included. The GHG balance of the bioenergy system is compared with the GHG balance of the traditional (reference) system to determine the net benefits of the bioenergy system.

Model results indicate that each of the bioenergy systems has lower soil C after 100 years than the corresponding reference system (Figure 1). These differences are largely due to relative declines in the resistant plant matter and humified pools. The difference is greatest in the short rotation eucalypt system, which shows a 35 t ha<sup>-1</sup> increase in soil C under the reference system, and a 6 t ha<sup>-1</sup> increase in the bioenergy case. The sawlog eucalypt reference system shows an initial decline followed by stabilisation of soil C. Under the bioenergy system, there is a continuing decline, and this system shows a loss of 35 tC ha<sup>-1</sup> over 100 years. The soil C stock varies little over 100 years in the pine system, both in the reference and bioenergy cases.

Changes in the soil C pool are small compared with the accumulation of C in tree biomass over the first rotation, and the growing pools of products (Figure 2). Over several rotations displaced fossil fuel carbon becomes the dominant pool, particularly in the sawlog eucalypt system, which has the highest proportion of removed biomass allocated to bioenergy rather than wood products due to low mill recovery for this species.

The net GHG balance of the bioenergy systems in comparison with the corresponding reference systems shows a significant benefit in increased C stocks for all three forestry systems (Figure 3, Table II). The cumulative value of displaced fossil fuel carbon is thirteen to twenty-two times greater than the relative decline in soil C stock.

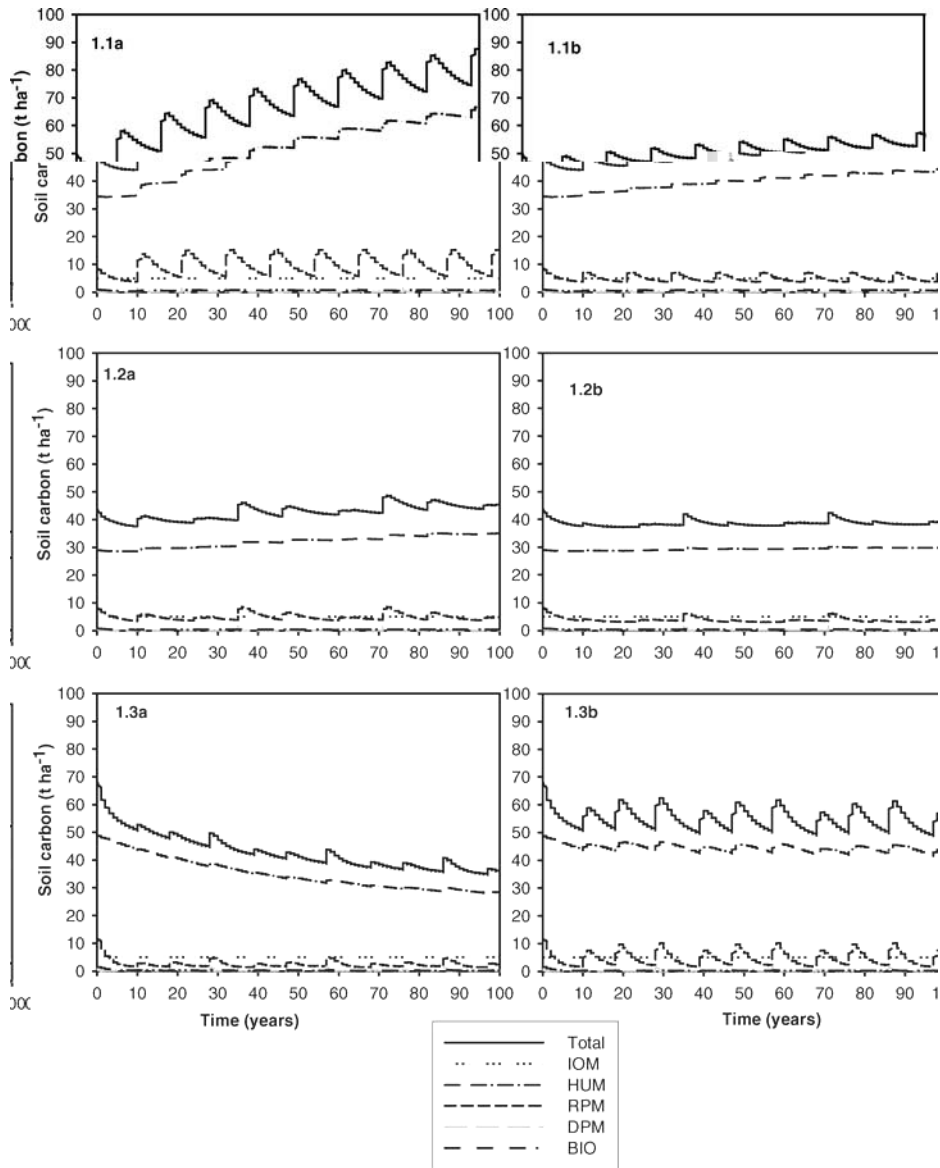


Figure 1. Soil carbon pools for short rotation eucalypt (1.1), pine (1.2) and sawlog eucalypt (1.3) conventional forestry systems (a) and bioenergy systems (b). IOM, HUM, BIO, RPM, DPM, refer to the inert organic matter, humified organic matter, microbial biomass, resistant plant material and decomposable plant material C pools in RothC.

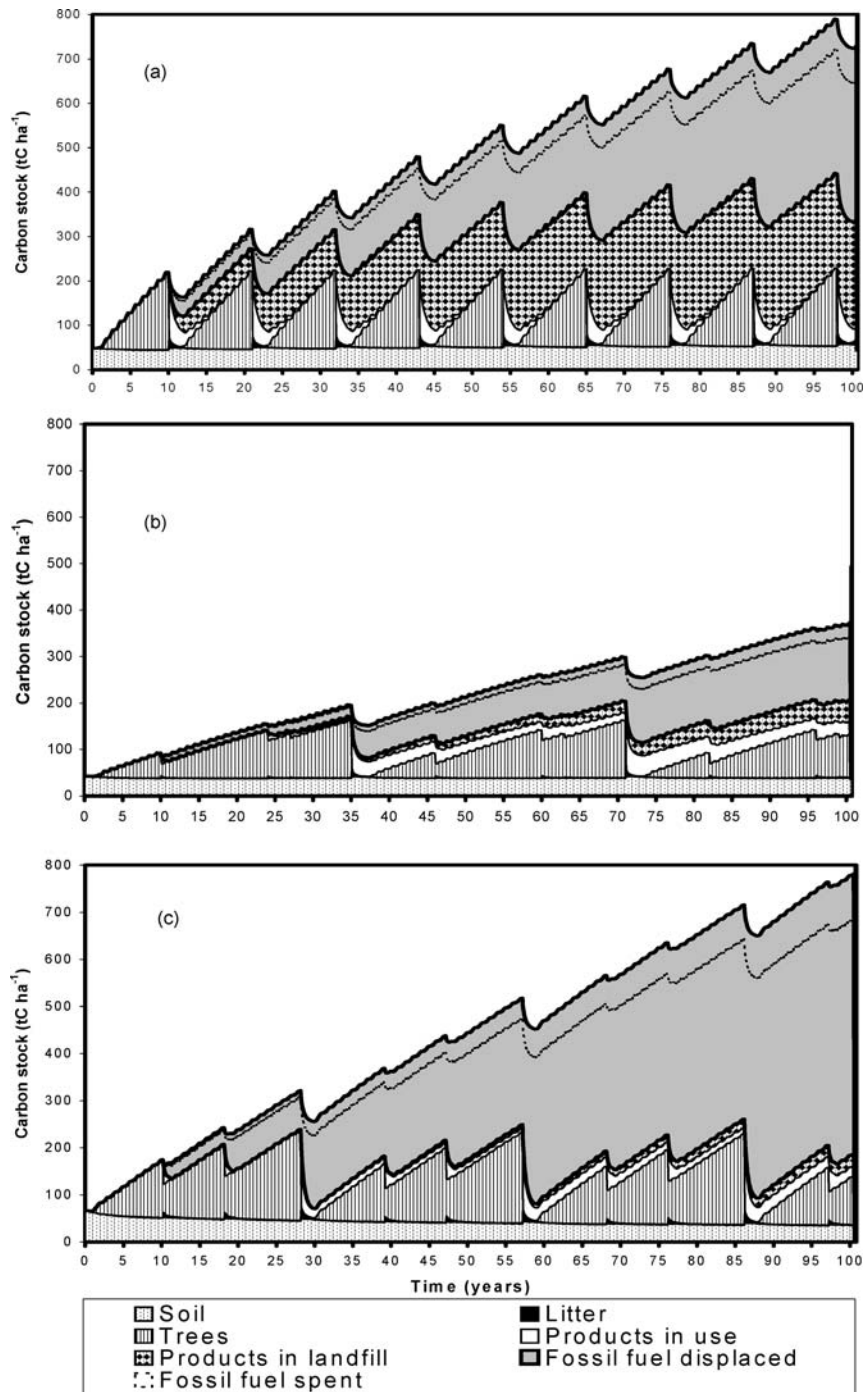


Figure 2. Carbon stock of all forest and product pools, avoided emissions, and fossil fuel spent for each bioenergy system for (a) short rotation eucalypt, (b) pine and (c) sawlog eucalypt. Fossil fuel spent reduces the total carbon stock to the net carbon stock—indicated by the broken line.

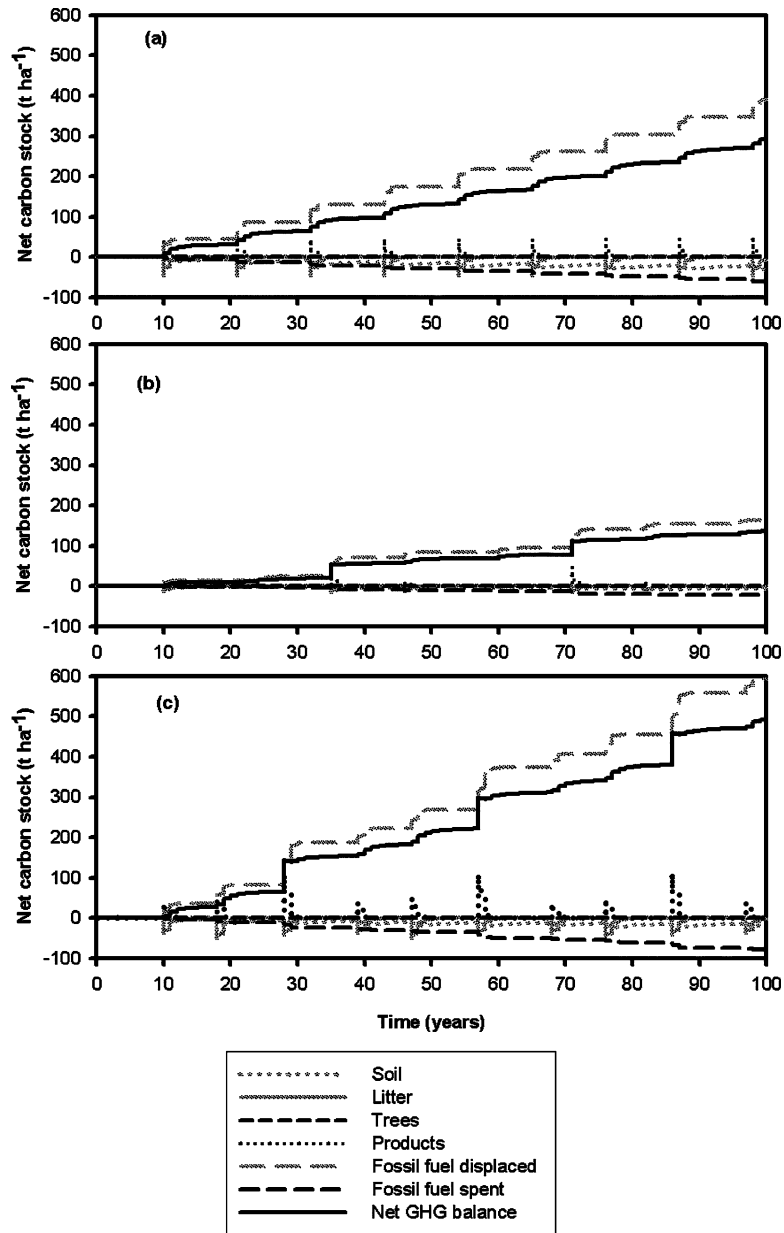


Figure 3. Difference between the bioenergy and reference cases in carbon stock of each pool in (a) short rotation eucalypt, (b) pine and (c) sawlog eucalypt. For soil and litter pools negative values indicate a relative decline in carbon stock; for fossil fuel spent, negative values indicate greater emissions.

TABLE II  
Change in carbon stock of the forest and product pools, and displaced fossil fuel, over 100 years. Positive values indicate a gain, negative values a decline

Pool	Short rotation Eucalypt (tC ha <sup>-1</sup> )			Pine (tC ha <sup>-1</sup> )			Sawlog Eucalypt (tC ha <sup>-1</sup> )		
	Reference	Bioenergy	Difference <sup>d</sup>	Reference	Bioenergy	Difference <sup>d</sup>	Reference	Bioenergy	Difference <sup>d</sup>
Soil <sup>a</sup>	35	6	-30	3	-5	-6	-9	-35	-19
Litter <sup>b</sup>	5	2	-2	2	1	0	5	2	-1
Trees <sup>b</sup>	76	76	0	62	62	0	96	96	0
Products in use <sup>a</sup>	18	20	0	38	39	0	26	30	0
Products in landfill <sup>a</sup>	228	228	0	41	41	0	21	21	0
Fossil fuel displaced by bioenergy <sup>c</sup>	0	391	391	0	165	165	0	594	594
Fossil fuel spent	-16	-78	-62	-7	-29	-22	-17	-96	-79
Net GHG balance	345	644	296	139	274	136	123	612	494

<sup>a</sup>Value at 100 years determined from fitted trend line, to overcome influence of fluctuating pool size.

<sup>b</sup>Value at 100 years determined from average carbon stock of pool over the period.

<sup>c</sup>Cumulative value of displaced fossil fuel emissions at 100 years.

<sup>d</sup>Difference between bioenergy and reference case at 100 years.

## 8. Summary and Conclusion

Replacing current agricultural and forestry systems with systems that produce biomass for bioenergy is likely to affect soil carbon stocks, because it will alter the balance between organic matter inputs and losses from the soil carbon pool. There is a risk of depletion of soil carbon stocks in biomass production systems, because a higher proportion of the organic matter and nutrients are removed from the site, compared with conventional grain and timber production systems. Environmental and management factors will govern the magnitude and direction of change. Initial soil carbon content has a major influence: losses are most likely where soil C is initially high. Bioenergy systems such as coppiced willow, switchgrass, or long-rotation timber+biomass plantations are likely to enhance soil carbon where these replace conventional cropping, as intensively cropped soils are generally depleted in soil C. Soil C losses are most likely where soil C is initially high, such as where improved pasture is converted to biomass production: short-term loss of soil C is likely, and the equilibrium soil C stock under bioenergy systems may be lower than that of the previous pasture. Intensively managed bioenergy systems, such as perennial grasses and short rotation woody crops, are likely to have lower equilibrium soil C than long rotation forests, due to more frequent site disturbance and high rate of biomass removal. Measures that enhance soil C include maintenance of fertility through application of organic or artificial fertilisers or inclusion of legumes to promote plant growth, and retention of nutrient-rich foliage on-site.

Modelling results demonstrate that loss of soil C in bioenergy systems is associated with declines in the resistant plant matter and humified soil C pools. However, the relative soil C losses in bioenergy systems are likely to be small in comparison with displaced fossil fuel carbon, both for short rotation and sawlog plantations.

Thus, although there may be a small decline in soil C associated with bioenergy systems, this is negligible in comparison with the greenhouse mitigation benefit of avoided fossil fuel emissions, which continues to increase over successive harvests.

## Acknowledgements

We acknowledge the support for this project provided by International Energy Agency Task 38, and particularly thank Robert Matthews for helpful discussions on structure and content. We thank Gary Richards for making FullCAM available for this project, and Keryn Paul for advice on FullCAM, and for supplying the FullCAM parameterisation data.

## References

- Attiwill, P.M. and Leeper, G.W.: 1987, *Forest Soils and Nutrient Cycles*, Melbourne, Melbourne University Press.

- Ayanaba, A., Tuckwell, S.B. and Jenkinson, D.S.: 1976, 'The effects of clearing and cropping on the organic reserves and biomass of tropical forest soils', *Soil Biology and Biochemistry* **8**, 519–525.
- Bauhus, J., Khanna, P.K. and Menden, N.: 2000, 'Aboveground and belowground interactions in mixed plantations of *Eucalyptus globulus* and *Acacia mearnsii*', *Canadian Journal of Forest Research* **30**, 1886–1894.
- Beets, P.N. and Madgwick, H.A.I.: 1988, 'Above-ground dry matter and nutrient content of *Pinus radiata* as affected by lupin, fertilizer, thinning, and stand age', *New Zealand Journal of Forestry Science* **18**, 43–64.
- Binkley, D. and Resh, S.C.: 1999, 'Rapid changes in soils following eucalyptus afforestation in Hawaii', *Soil Science Society of America Journal* **63**, 222–225.
- Blair, G.J., Lefroy, R.D.B. and Lisle, L.: 1995, 'Soil carbon fractions based on their degree of oxidation, and the development of a carbon management system for agricultural soils', *Australian Journal of Agricultural Research* **46**, 1459–1466.
- Boeckx, P. and Van Cleemput, O.: 2001, 'Estimates of N<sub>2</sub>O and CH<sub>4</sub> fluxes from agricultural land in various regions of Europe', *Nutrient Cycling in Agroecosystems* **60**, 35–47.
- Bolin, B., Sukumar, R., Ciaia, P., Cramer, W., Jarvis, P., Kheshgi, H., Nobre, C., Semenov, S. and Steffen, W.: 2000, 'Global Perspective', in: R. Watson, I.R. Noble, B. Bolin, N.H. Ravindranath, D.J. Verardo and D.J. Dokken (eds.), *Land Use, Land-Use Change, and Forestry: A Special Report of the Intergovernmental Panel on Climate Change*, Cambridge, Cambridge University Press, pp. 23–51.
- Brack, C.L. and Richards, G.P.: 2002, 'Carbon accounting model for forests in Australia', *Environmental Pollution* **116**(Supplement 1), S187–S194.
- Brown, S. and Lugo, A.: 1990, 'Effects of forest clearing and succession on the carbon and nitrogen content of soils in Puerto Rico and U.S. Virgin Islands', *Plant and Soil* **124**, 53–64.
- Bunnell, F.L., Tait, D.E.N., Flanagan, P.W. and Van Cleeve, K.: 1977, 'Microbial respiration and substrate weight loss. I. A general model of the influence of abiotic variables', *Soil Biology and Biochemistry* **9**, 33–40.
- Chapela, I.H., Osher, L.J., Horton, T.R. and Henn, M.R.: 2001, 'Ectomycorrhizal fungi introduced with exotic pine plantations induce soil carbon depletion', *Soil Biology and Biochemistry* **33**, 1733–1740.
- Cheng, W., Johnson, D.W. and Fu, S.: 2003, 'Rhizosphere effects on decomposition: Controls of plant species, phenology and fertilization', *Soil Science Society of America Journal* **67**, 1418–1427.
- Cogle, A.L., Reddy, M.V.R., Rao, K.P.C., Smith, G.D., McGarry, D. and Yule, D.F.: 1995, 'The role of biological practices and the soil biota in management of sealing, crusting and hardsetting soils' in: H.B. So, G.D. Smith, S.R. Rain, B.M. Schafer and R.J. Loch (eds.), *Sealing, Crusting and Hardsetting Soils: Productivity and Conservation*, Brisbane, Australian Society of Soil Science Inc (Queensland Branch) pp. 305–324.
- Coleman, K., Jenkinson, D.S., Crocker, G.J., Grace, P.R., Klir, J., Körschens, M., Poulton, P.R. and Richter, D.D.: 1997, 'Simulating trends in soil organic carbon in long-term experiments using RothC-26.3', *Geoderma* **81**, 29–44.
- Conant, R.T. and Paustian, K.: 2002, 'Spatial variability of soil organic carbon in grasslands: Implications for detecting change at different scales', *Environmental Pollution* **116**, S127–S135.
- Dalal, R.C. and Chan, K.Y.: 2001, 'Soil organic matter in rainfed cropping systems of the Australian cereal belt', *Australian Journal of Soil Research* **39**, 435–464.
- Del Grosso, S., Ojima, D., Parton, W., Mosier, A., Peterson, G. and Schimel, D.: 2002, 'Simulated effects of dryland cropping intensification on soil organic matter and greenhouse gas exchanges using the DAYCENT ecosystem model', *Environmental Pollution* **116**, S75–S83.
- Franzluebbers, A.J., Stuedemann, J.A., Schomburg, H.H. and Wilkinson, S.R.: 2000, 'Soil organic C and N pools under long-term pasture management in the Southern Piedmont USA', *Soil Biology and Biochemistry* **32**, 469–478.

- Garten, C.T. and Wulfschleger, S.D.: 1999, 'Soil carbon inventories under a bioenergy crop (Switchgrass): Measurement limitations', *Journal of Environmental Quality* **28**, 1359–1365.
- Gifford, R.M. and Barrett, D.J.: 1999, 'The carbon content of soil and vegetation in selected areas: Changes in soil and plant tissue C and N contents after clearing to pasture and conversion to forests', Final NNGI Inventory Development Project Report to Environment Australia 81p.
- Grigal, D.F. and Berguson, W.E.: 1998, 'Soil carbon changes associated with short-rotation systems', *Biomass and Bioenergy* **14**, 371–377.
- Grove, T.S., O'Connell, A.M., Mendham, D.S., Barrow, N.J. and Rance, S.J.: 2001, *Sustaining the Productivity of Tree Crops on Agricultural Land in South-Western Australia*, Publication No. 01/09. Canberra, Rural Industries Research and Development Corporation.
- Guo, L.B. and Gifford, R.M.: 2002, 'Soil carbon stocks and land-use change: A meta analysis', *Global Change Biology* **8**, 345–360.
- Hansen, E.M., Christensen, B.T., Jensen, L.S. and Kristensen, K.: 2004, 'Carbon sequestration in soil beneath long-term *Miscanthus* plantations as determined by <sup>13</sup>C abundance', *Biomass and Bioenergy* **26**, 97–105.
- Heilman, P. and Norby, R.J.: 1998, 'Nutrient cycling and fertility management in temperate short rotation forest systems', *Biomass and Bioenergy* **14**, 361–370.
- Inbar, Y., Chen, Y. and Hadar, Y.: 1990, 'Humic substances formed during the composting of organic matter', *Soil Science Society of America Journal* **54**, 1316–1323.
- Intergovernmental Panel on Climate Change (IPCC): 1997, 'Revised 1996 Guidelines for National Greenhouse Gas Inventories,' J.T. Houghton, L.G. Meira Filho, B. Lim, K. Treanton, I. Mamaty, Y. Bonduki, D.J. Griggs and B. Callender (eds.), (Intergovernmental Panel on Climate Change: Bracknell, U.K)
- Intergovernmental Panel on Climate Change (IPCC): 2003, 'Good Practice Guidance for Land Use, Land-Use Change and Forestry.' (National Greenhouse Gas Inventories Programme Technical Support Unit, Institute for Global Environmental Strategies: Kanagawa, Japan).
- Islam, K.R. and Weil, R.R.: 2000, 'Soil quality indicator properties in mid-Atlantic soils as influenced by conservation management', *Journal of Soil and Water Conservation* **55**, 69–78
- Janik, L.J., Merry, R.H. and Skjemstad, J.O.: 1998, 'Can mid infrared diffuse reflectance analysis replace soil extractions?', *Australian Journal of Experimental Agriculture* **38**, 681–696.
- Janssens, I.A., Sampson, D.A., Curiel-Yuste, J., Carrara, A. and Ceulemans, R.: 2002, 'The carbon cost of fine root turnover in a Scots pine forest', *Forest Ecology and Management* **168**, 231–240.
- Jenkinson, D.S., Hart, P.B.S., Rayner, J.H. and Parry, L.C.: 1987, 'Modelling the turnover of organic matter in long-term experiments at Rothamsted', *INTERCOL Bulletin* **15**, 1–8.
- Jenkinson, D.S., Adams, D.E. and Wild, A.: 1991, 'Model estimates of CO<sub>2</sub> emissions from soil in response to global warming,' *Nature* **351**, 304–306.
- Johnson, D.W.: 1992, 'Effects of forest management on soil carbon storage', *Water, Air and Soil Pollution* **64**, 83–120.
- Johnson, D.W. and Curtis, P.S.: 2001, 'Effects of forest management on soil C and N storage: Meta analysis', *Forest Ecology and Management* **140**, 227–238.
- Johnson, D.W., Knoepp, J.D., Swank, W.T., Shan, J., Morris, L.A., Van Lear, D.H. and Kapeluck, P.R.: 2002, 'Effects of forest management on soil carbon: results of some long-term resampling studies', *Environmental Pollution* **116**(Supplement 1), S201–S208.
- Kort, J., Collins, M. and Ditsch, D.: 1998, 'A review of soil erosion potential associated with biomass crops', *Biomass and Bioenergy* **14**, 351–359.
- Kuzyakov, Y. and Domanski, G.: 2000, 'Carbon input by plants into the soil. Review', *Journal of Plant Nutrition and Soil Science* **163**, 421–431.
- Lacey, S.T., Parekh, J., Gibbons, D.R. and Brennan, P.D.: 2001, 'Deep may not be meaningful: Cost and effectiveness of various ripping tine configurations in a plantation cultivation trial in eastern Australia', *New Forests* **21**, 231–248.

- Lal, R.: 1997, 'Residue management, conservation tillage and soil restoration for mitigating greenhouse effect by CO<sub>2</sub>-enrichment', *Soil and Tillage Research* **43** 81–107.
- Landsberg, J.J. and Waring, R.H.: 1997, 'A generalised model of forest productivity using simplified concepts of radiation-use efficiency, carbon balance and partitioning', *Forest Ecology and Management* **95**, 209–228.
- Ledgard, S.F.: 1991, 'Transfer of fixed nitrogen from white clover to associated grasses in swards grazed by dairy-cows, estimated using N-15 methods', *Plant and Soil* **131**, 215–223.
- Lugo, A.E. and Brown, S.: 1993, 'Management of tropical soils as sinks or sources of atmospheric carbon', *Plant and Soil* **149**, 27–41.
- Ma, Z., Wood, C.W. and Bransby, D.I.: 2000a, 'Carbon dynamics subsequent to establishment of switchgrass', *Biomass and Bioenergy* **18**, 93–104.
- Ma, Z., Wood, C.W. and Bransby, D.I.: 2000b, 'Soil management impacts on soil carbon sequestration by switchgrass', *Biomass and Bioenergy* **18**, 469–477.
- Madeira, M.V.A., Melo, M.G., Alexandre, C.A. and Steen, E.: 1989, 'Effects of deep ploughing and superficial disc harrowing on physical and chemical soil properties and biomass in a new plantation of *Eucalyptus globulus*', *Soil and Tillage Research* **14**, 163–175.
- Mann, L.K.: 1986, 'Changes in soil carbon storage after cultivation', *Soil Science* **142**, 279–288.
- Martens, D.A.: 2000, 'Plant residue biochemistry regulates soil carbon cycling and carbon sequestration', *Soil Biology and Biochemistry* **32**, 361–369.
- McKenzie, N., Ryan, P., Fogarty, P. and Wood, J.: 2000, *Sampling, Measurement and Analytical Protocols for Carbon Estimation in Soil, Litter and Coarse Woody Debris* National Carbon Accounting System Technical Report No. 14, Canberra, Australian Greenhouse Office.
- Mendham, D.S., O'Connell, A.M., Grove, T.S. and Rance, S.J.: 2003, 'Residue management effects on soil carbon and nutrient contents and growth of second rotation eucalypts', *Forest Ecology and Management* **181**, 357–372.
- Motavalli, P.P., Palm, C.A., Parton, W.J., Elliot, E.T. and Frey, S.D.: 1995, 'Soil pH and organic C dynamics in tropical forest soils: Evidence from laboratory and simulation studies', *Soil Biology and Biochemistry* **27**, 1589–1599.
- Murty, D., Kirschbaum, M.U.F., McMurtrie, R.E. and McGilvray, H.: 2002, 'Does conversion of forest to agricultural land change soil carbon and nitrogen? A review of the literature', *Global Change Biology* **8**, 105–123.
- Nabuurs, G.J., Ravindranath, N.H., Paustian, K., Freibauer, A., Hohenstein, W. and Makundi, W.: 2003, 'LUCF Sector Good Practice Guidance' Ch3 in *Good Practice Guidance for Land Use, Land-Use Change and Forestry* Hayama, Japan, Institute for Global Environmental Strategies (IGES) for the Intergovernmental Panel on Climate Change (IPCC).
- Oades, J.M.: 1988, 'The retention of organic matter in soils', *Biogeochemistry* **5**, 35–70.
- O'Connell, A.M. and Grove, T.S.: 1993, 'Influence of nitrogen and phosphorus fertilisers on amount and nutrient content of litterfall in a regrowth *Eucalyptus* forest', *New Forest* **7**, 33–47.
- Olsson, B.A., Bengtsson, J. and Lundkvist, H.: 1996, 'Effects of different forest harvest intensities on the pools of exchangeable cations in coniferous forest soils', *Forest Ecology and Management* **84**, 135–147.
- Palmer, C.J., Smith, W.D. and Conkling, B.L.: 2002, 'Development of a protocol for monitoring status and trends in forest soil carbon at a national level', *Environmental Pollution* **116**, S209–S219.
- Parfitt, R.L., Ross, D.J. and Hill, L.F.: 2003, 'Soil nitrogen mineralisation changes rapidly when pine is planted into herbicide-treated pasture – the first two years of growth', *Australian Journal of Soil Research* **41**, 459–469.
- Parton, W.J., Schimel, D.S., Cole, C.V. and Ojima, D.S.: 1987, 'Analysis of factors controlling soil organic matter levels in great plain grasslands', *Journal of the Soil Science Society of America* **51**, 1173–1179.

- Paul, K.I., Polglase, P.J., Nyakuengama, J.G. and Khanna, P.K.: 2002, 'Change in soil carbon following afforestation', *Forest Ecology and Management* **168**, 241–257.
- Paul, K.I., Polglase, P.J. and Richards, G.P.: 2003, 'Predicted change in soil carbon following afforestation or reforestation, and analysis of controlling factors by linking a C accounting model (CAMFor) to models of forest growth (3PG), litter decomposition (GENDEC) and soil C turnover (RothC)', *Forest Ecology and Management* **177**, 485–501.
- Post, W.M. and Kwon, K.C.: 2000, 'Soil carbon sequestration and land-use change: Processes and potential', *Global Change Biology* **6**, 317–327.
- Poulton, P.R.: 1995, 'The importance of long-term trials in understanding sustainable farming systems: The Rothamsted experience' *Australian Journal of Experimental Agriculture* **35**, 825–834.
- Rasmussen, P.E. and Parton, W.J.: 1994, 'Long-term effects of residue management in wheat/fallow: I. Inputs, yield, and soil organic matter', *Soil Science Society of America Journal* **58**, 523–530.
- Richards, G.P.: 2001, *The FullCAM Carbon Accounting Model: Development, Calibration and Implementation for the National Carbon Accounting System* National Carbon Accounting System Technical Report No. 28 Canberra, Australian Greenhouse Office.
- Romanya, J., Cortina, J., Falloon, P., Coleman, K. and Smith, P.: 2000, 'Modelling changes in soil organic matter after planting fast-growing *Pinus radiata* on Mediterranean agricultural soils', *European Journal of Soil Science* **51**, 627–641.
- Saggar, S., Hedley, C.B. and Salt, G.J.: 2001, 'Soil microbial biomass, metabolic quotient, and carbon and nitrogen mineralisation in 25-year-old *Pinus Radiata* agroforestry regimes', *Australian Journal of Soil Research* **39**, 491–504.
- Scott, N.A., Tate, K.R., Ford-Robertson, J., Giltrap, D.J. and Smith, C.T.: 1999, 'Soil carbon storage in plantation forests and pastures: land-use change implications', *Tellus B* **51**, 326–335.
- Scott, N.A., Tate, K.R., Giltrap, D.J., Smith, C.T., Wilde, H.R., Newsome, P.J.F. and Davis, M.R.: 2002, 'Monitoring land-use change effects on soil carbon in New Zealand: Quantifying baseline soil carbon stocks', *Environmental Pollution* **116** (Supplement 1), S167–S186.
- Schlamadinger, B. and Marland, G.: 1996, 'The role of forest and bioenergy strategies in the global carbon cycle', *Biomass and Bioenergy* **10**, 275–300.
- Schroeder, P.: 1991, 'Can intensive forest management increase carbon storage in forests?', *Environmental Management* **15**, 474–481.
- Shepherd T.G., Saggar S., Newman, R.H., Ross, C.W. and Dando, J.L.: 2001, 'Tillage induced changes to soil structure and organic carbon fractions in New Zealand soils', *Australian Journal Soil Research* **39**, 465–489.
- Sherwood, S. and Uphoff, N.: 2000, 'Soil health: Research, practice and policy for a more regenerative agriculture', *Applied Soil Ecology* **15**, 85–97.
- Skjemstad, J.O., Spouncer, L.R., Cowie, B. and Swift, R.S.: 2004, 'Calibration of the Rothamsted organic carbon turnover model (RothC ver.26.3), using measurable soil organic carbon pools', *Australian Journal of Soil Research* **42**, 79–88.
- Smethurst, P.J. and Nambiar, E.K.S.: 1995, 'Changes in soil carbon and nitrogen during the establishment of a second crop of *Pinus radiata*', *Forest Ecology and Management* **73**, 145–155.
- Smith, C.T., Lowe, A.T., Skinner, M.F., Beets, P.N., Schoenholtz, S.H. and Fang, S.: 2000a, 'Response of radiata pine forests to residue management and fertilisation across a fertility gradient in New Zealand', *Forest Ecology and Management* **138**, 203–223.
- Smith, J.H.G. and DeBell, D.S.: 1973, 'Opportunities for short rotation culture and complete utilization of seven northwestern tree species', *Forestry Chronicle* **49**, 31–34.
- Smith, P.: 2004, 'Monitoring and verification of soil carbon changes under Article 3.4 of the Kyoto Protocol', *Soil Use and Management* (in press).
- Smith, P., Powlson, D.S., Glendinning, M.J. and Smith J.U.: 1998, 'Preliminary estimates of the potential for carbon mitigation in European soils through no-till farming', *Global Change Biology* **4**, 679–685.

- Smith, P., Powlson, D.S., Smith, J.U., Falloon, P.D. and Coleman, K.: 2000b, 'Meeting Europe's climate change commitments: Quantitative estimates of the potential for carbon mitigation by agriculture', *Global Change Biology* **6**, 525–539.
- Smith, P., Smith, J.U., Powlson, D.S., McGill, W.B., Arah, J.R.M., Chertov, O.G., Coleman, K., Franko, U., Frolking, S., Jenkinson, D.S., Jensen, L.S., Kelly, R.H., Klein-Gunnewiek, H., Komarov, A., Li, C., Molina, J.A.E., Mueller, T., Parton, W.J., Thornley, J.H.M. and Whitmore, A.P.: 1997, 'A comparison of the performance of nine soil organic matter models using seven long-term experimental datasets', *Geoderma* **81**, 153–225.
- Spain, A.V. and Hutson, B.R.: 1983, 'Dynamics and fauna of the litter layers', in: *Soils: An Australian viewpoint*, Melbourne, CSIRO, Division of Soils, pp. 612–628.
- Spain, A.V., Isbell, R.F. and Probert, M.E.: 1983, 'Soil organic matter', in: *Soils: An Australian viewpoint*, Melbourne, CSIRO, Division of Soils, pp. 551–563.
- Tisdall, J.M. and Oades, J.M.: 1982, 'Organic matter and water-stable aggregates in soils', *Journal of Soil Science* **33**, 141–163.
- Tolbert, V.R., Todd, D.E., Mann, L.K., Jawdy, C.M., Mays, D.A., Malik, R., Bandaranayake, W., Houston, A., Tyler, D. and Pettry, D.E.: 2002, *Environmental Pollution* **116** (Supplement 1), S97–S106.
- Turner, J. and Lambert, M.: 1986, 'Nutrition and nutritional relationships of *Pinus radiata*,', *Annual Review of Ecology and Systematics* **17**, 325–350.
- Turner, J. and Lambert, M.: 2000, 'Change in organic carbon in forest plantation soils in eastern Australia', *Forest Ecology and Management* **133**, 231–247.
- Van Cleeve, K. and Powers, R.F.: 1995, 'Soil carbon, soil formation, and ecosystem development', in: W.W. McFee and J. M. Kelly (ed.), *Carbon Forms and Functions in Forest Soils* Madison, USA, Soil Science Society of America, pp. 155–200.
- Vesterdal, L., Ritter, E. and Gunderson, P.: 2002, 'Change in soil organic carbon following afforestation of former arable land', *Forest Ecology and Management* **169**, 137–147.
- Vogt, K.A.: 1991, 'Carbon budgets of temperate forest ecosystems', *Tree Physiology* **9**, 69–86.
- West, T.O. and Marland, G.: 2002, 'A synthesis of carbon sequestration, carbon emissions, and net carbon flux in agriculture: Comparing tillage practices in the United States', *Agriculture, Ecosystems and Environment* **91**, 217–232.
- Whitbread, A.M., Lefroy, R.D.B. and Blair, G.J.: 1998, 'A survey of the impacts of cropping on soil physical and chemical properties in north-western New South Wales', *Australian Journal of Soil Research* **36**, 669–682.
- Wood, S. and Cowie, A.L.: 2004, A review of greenhouse gas emission factors for fertiliser production. Report to IEA Bioenergy Task 38.
- Woods, L.E., Cole C.V, Porter, L.K. and Coleman, D.C.: 1987, 'Transformations of added and indigenous nitrogen in gnotobiotic soil: A comment on the priming effect', *Soil Biol. Biochem.* **19**, 673–678.
- Zinati, G.M., Li, Y.C. and Bryan, H.H.: 2001, 'Utilization of compost increases organic carbon and its humin, humic acid and fulvic acid fractions in calcareous soil', *Compost Science and Utilization* **9**, 156–162.
- Zinn, Y.L., Resck, D.V.S. and da Silva, J.E.: 2002, 'Soil organic carbon as affected by afforestation with *Eucalyptus* and *Pinus* in the Cerrado region of Brazil', *Forest Ecology and Management* **166**, 285–294.